

# Aerial surveys between Chinchilla and Cecil Plains

Arrow Energy will be carrying out aerial surveys between Chinchilla and Cecil Plains in May, weather permitting.

These routine surveys are part of our ongoing monitoring of the Surat Basin landscape.

They help us to understand the land, informing our current or potential future activities.

## What to expect

You may see a small plane flying in a grid formation at approximately 1000 metres.

The plane will be in the air for up to four hours a day.

The surveys use Light Detection and Ranging (LiDAR) technology to generate a three-dimensional map of the surface, showing the shape and characteristics of the land.

No personal information or identifying features will be collected during the survey.

## Purpose and benefits

These surveys help us understand changes to the landscape over time, enabling us to identify naturally occurring changes and assess the potential impacts of our activities.

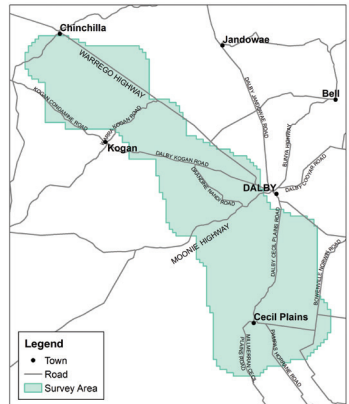
Information gathered is shared with the Queensland Government's Office of Groundwater Impact Assessment.

## Get in touch

For more information or any inquiries, please contact us at **1800 038 856** (toll free) or email [info@arrowenergy.com.au](mailto:info@arrowenergy.com.au).



An example of the type of plane used.



A map of the planned survey area.