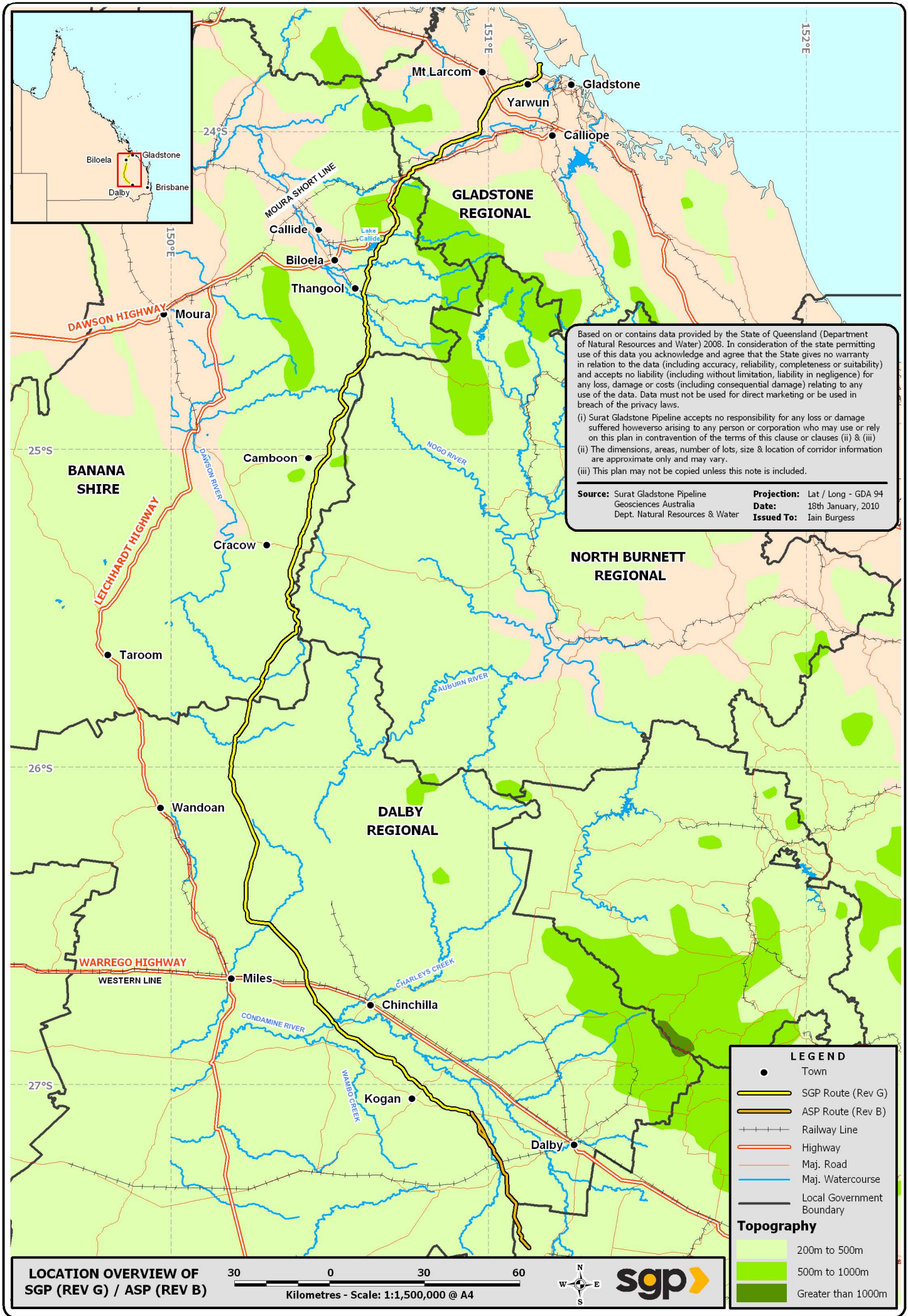


**SURAT-GLADSTONE PIPELINE PRELIMINARY ROUTE (REV G)
ARROW-SURAT PIPELINE PRELIMINARY ROUTE (REV G)**



Based on or contains data provided by the State of Queensland (Department of Natural Resources and Water) 2008. In consideration of the state permitting use of this data you acknowledge and agree that the State gives no warranty in relation to the data (including accuracy, reliability, completeness or suitability) and accepts no liability (including without limitation, liability in negligence) for any loss, damage or costs (including consequential damage) relating to any use of the data. Data must not be used for direct marketing or be used in breach of the privacy laws.

(i) Surat Gladstone Pipeline accepts no responsibility for any loss or damage suffered howsoever arising to any person or corporation who may use or rely on this plan in contravention of the terms of this clause or clauses (ii) & (iii)

(ii) The dimensions, areas, number of lots, size & location of corridor information are approximate only and may vary.

(iii) This plan may not be copied unless this note is included.

Source: Surat Gladstone Pipeline
Geosciences Australia
Dept. Natural Resources & Water

Projection: Lat / Long - GDA 94
Date: 18th January, 2010
Issued To: Iain Burgess

LEGEND

- Town
- SGP Route (Rev G)
- ASP Route (Rev B)
- +—+— Railway Line
- Highway
- Maj. Road
- Maj. Watercourse
- Local Government Boundary

Topography

- 200m to 500m
- 500m to 1000m
- Greater than 1000m

**LOCATION OVERVIEW OF
SGP (REV G) / ASP (REV B)**



NOT FOR CONSTRUCTION

WORKSPACE: \\samps\fs2\Archive\SGP\MapInfo\Project\zWorkRequests\152_SGP_GIS\SGP_ASP_Overview.wor