

# Plainview Pilot

October 2018

## Arrow's Plainview Pilot is a five-well coal seam gas appraisal program near the existing Tipton field, 30km west of Dalby.

Arrow has four existing coal seam gas (CSG) production fields in the Surat Basin – Tipton West, Daandine, Stratheden and Kogan North. Arrow has been commercially supplying CSG from the Surat Basin since 2004.

The Plainview Pilot is Arrow's most easterly appraisal production wells, and has deliberately been placed on the east side of a geological formation called the Horrane Fault.

All of Arrow's current production wells are to the west of the fault.

### The Horrane Fault

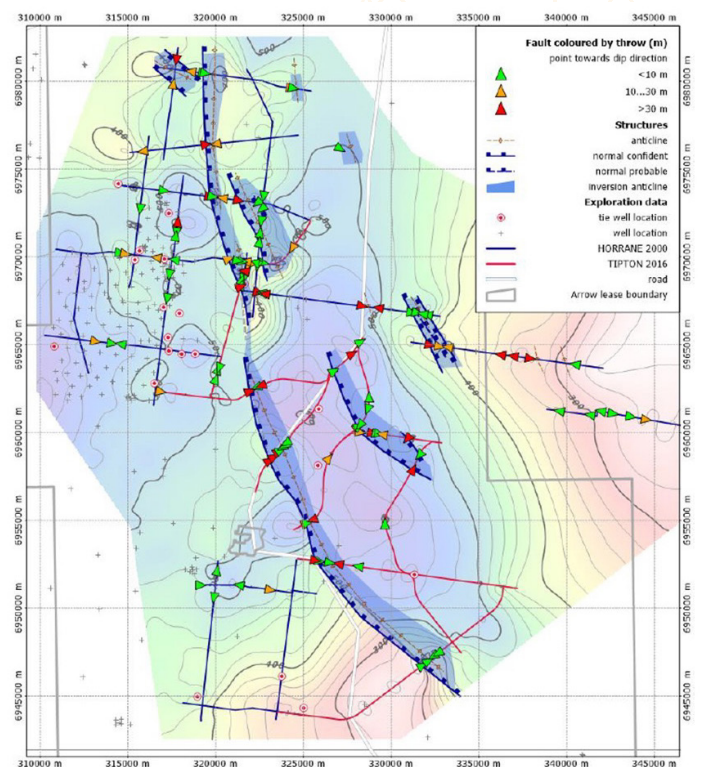
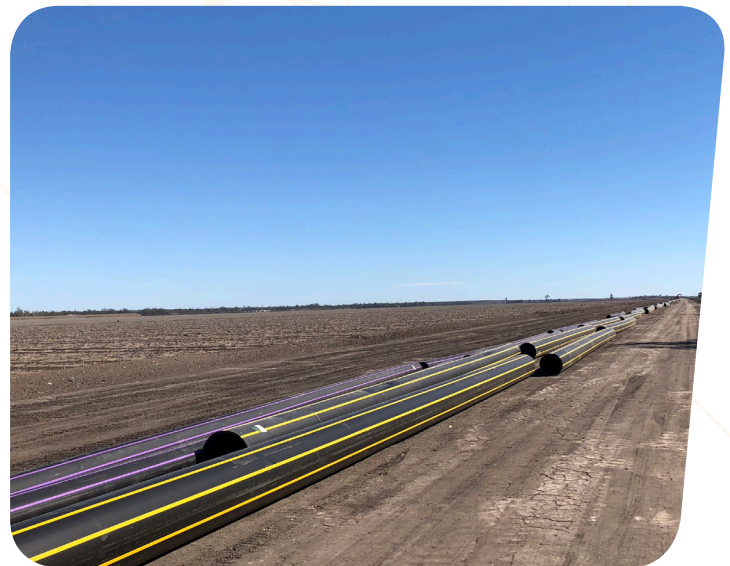
The Horrane Fault is a sub-surface crack through rock layers, caused by deep-earth pressures over many millions of years. While faults occur across Arrow's Surat Basin tenure, the Horrane Fault is the largest.

The fault lies on the eastern side of Arrow's Tipton gas field and runs ~50km north-south; with a vertical throw of up to 60m. The west-side of the fault is raised above the east-side.

Parts of the Condamine Alluvium lie above the fault. Arrow continues to investigate whether the fault is sealed, or if it allows gas and water to transmit through it.

This will also help to inform where well infrastructure might be located for gas production. For example, if the fault is sealed, wells may need to be placed around the fault lines to allow gas to flow to the wells.

To date, all research suggests it is strongly sealed.



Structural interpretation of the Tipton and Horrane seismic surveys. The background image and contours refer to the converted depth of the Eurombah horizon.



## Plainview Pilot infrastructure

### Appraisal wells

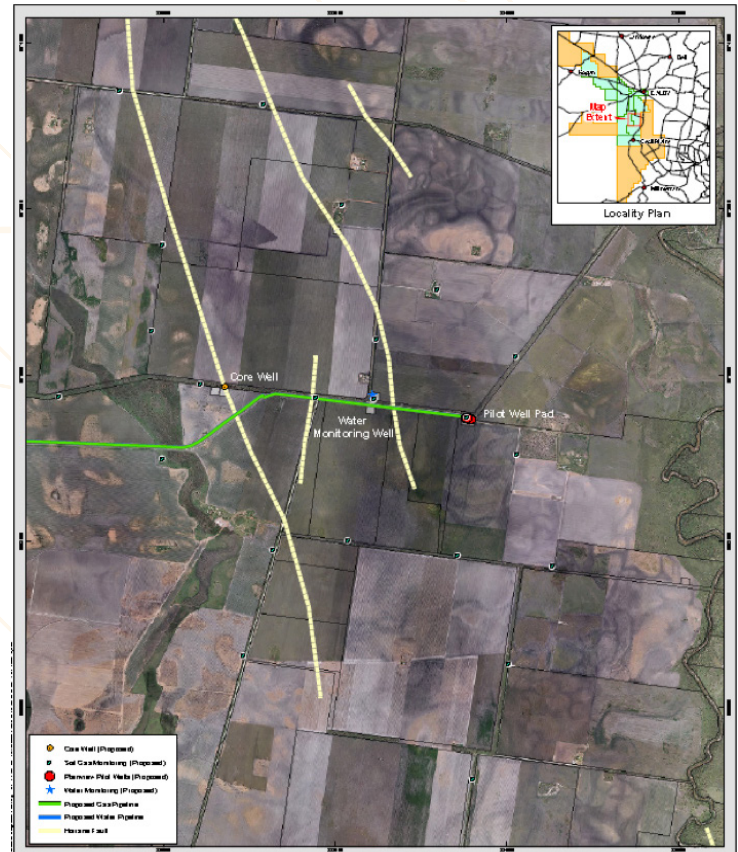
- Five appraisal wells on a single well pad, to test CSG production.

### Gas and water monitoring

- Groundwater monitoring wells, to baseline and monitor water levels during production.
- Shallow soil gas monitoring holes and measuring equipment, to determine baseline soil gas levels and measure any changes in soil gas levels once production from the pilot commences.

### Gathering infrastructure

- Gas and water will be processed at the existing Tipton West central gas processing facility and water treatment facility, via gathering pipes from the pad. This means the gas will not be flared or vented.



## Plainview Pilot

The Plainview Pilot will identify how the Horrane Fault interacts with the Walloon Coal Measures and the Condamine Alluvium. It will also test the success of a CSG operation east of the Horrane fault.

Deviated wells will reduce the footprint of well infrastructure, in line with Arrow's coexistence commitments for operating on Intensively Farmed Land, in the Surat Basin.

## Soil gas monitoring

Twenty-three soil gas monitoring points are located around the Plainview Pilot. The points will measure the baseline gas level in the soil around the Horrane Fault prior to, and throughout the pilot's production.



### Contact details

Freecall: 1800 038 856

Email: [info@arrowenergy.com.au](mailto:info@arrowenergy.com.au)

Visit: [www.arrowenergy.com.au](http://www.arrowenergy.com.au)

BRISBANE DALBY MORANBAH

#### Legal Disclaimer

While Arrow Energy Pty Ltd has endeavoured to ensure that all information provided in this publication is accurate and up to date at the time of publication, it takes no responsibility for any error or omission relating to this information. Furthermore, the information provided shall not constitute financial product advice pursuant to the Australian Financial Services Licence held by Arrow Energy Pty Ltd's related body corporate. To the maximum extent permitted by law, Arrow Energy Pty Ltd will not be liable for any cost, loss or damage (whether caused by negligence or otherwise) suffered by you through your use of this publication. © Arrow Energy Pty Ltd October 2018