

Buried pipelines

August 2020

If you are planning any activities near an Arrow pipeline, please read the following information carefully.



Arrow Energy's existing operations in the Surat and Bowen basins include many kilometres of buried High Density Polyethylene (HDPE) and steel pipelines that transport coal seam gas (CSG) to and from gas processing and power generation facilities.

These pipelines are marked above ground with signage and below ground with buried marker tape.

Dial Before You Dig

If you plan to dig, drill, excavate or bore above or near pipelines, please contact Arrow and **Dial Before You Dig** before commencing any excavation. The Dial Before You Dig service will enable you to obtain information regarding the specific location of the buried pipeline, other services that may be at the location, or any associated infrastructure.

For your safety

- **Don't** trench, dig, drill or bore anywhere on the pipeline before contacting Arrow and **Dial Before You Dig**.
- **Don't** enter or touch any Arrow above ground facilities. These facilities may be electrically energised (this includes valves and drain points).
- In the unlikely event you see an exposed pipeline, don't touch it. Pipelines can become electrically energised during storms and electrical faults. Report any exposed pipeline to Arrow. Only personnel trained and authorised by Arrow should access pipeline equipment.
- In the very unlikely instance of a suspected pipeline leak, **don't go within 500 metres of the area**, and notify Arrow on **1800 038 856**.

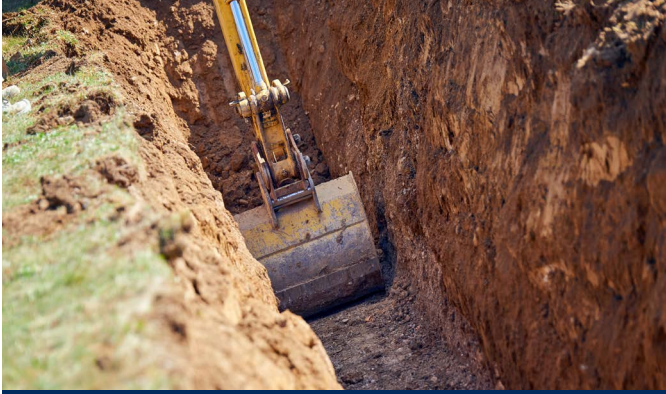
Reporting activities

Contact Arrow on **1800 038 856** and **Dial Before You Dig** on **1100** before carrying out any of these activities near the pipeline or above ground facilities:

- blasting
- boring
- building
- digging
- drainage work
- drilling
- erosion control
- excavating
- grading
- installing fencing
- tunnelling
- planting trees
- trenching
- transport of heavy loads
- use of vibrating machinery

As new pipelines settle into the ground, you may notice some soil subsidence along the pipeline. Report any subsidence or erosion to Arrow who will remediate the area.

All of Arrow's above ground facilities (e.g. high point vents) are fenced and marked with signage. Please report any Arrow above-ground facilities that are unfenced or damaged.



In the unlikely event of an emergency

- If you witness an emergency along the pipeline immediately move at least 500 metres away from the site and call Emergency Services on 000, then call Arrow's 24-hour emergency hotline.
- If you suspect that an Arrow pipeline is leaking gas, call the 24-hour emergency hotline.
- When you call Arrow's emergency hotline, we'll ask you:
 - your location, name and contact number
 - the nature of the emergency
 - whether anyone is injured or missing
 - whether you have contacted Emergency Services.

If you have any questions about Arrow pipelines or maintaining the state of the pipeline easement, please contact us on the details below.

Contact details

Freecall: 1800 038 856

Email: info@arrowenergy.com.au

Visit: www.arrowenergy.com.au

BRISBANE DALBY MORANBAH

**Arrow's 24-hour emergency hotline:
1800 779 488**

Legal Disclaimer

While Arrow Energy Pty Ltd has endeavoured to ensure that all information provided in this publication is accurate and up to date at the time of publication, it takes no responsibility for any error or omission relating to this information. Furthermore, the information provided shall not constitute financial product advice pursuant to the Australian Financial Services Licence held by Arrow Energy Pty Ltd's related body corporate. To the maximum extent permitted by law, Arrow Energy Pty Ltd will not be liable for any cost, loss or damage (whether caused by negligence or otherwise) suffered by you through your use of this publication. © Arrow Energy Pty Ltd August 2020