



**coffey**  **environments**  
SPECIALISTS IN ENVIRONMENTAL,  
SOCIAL AND SAFETY PERFORMANCE



**Surat Gas Project  
Environmental Impact Statement (EIS process)  
30 April to 10 May 2012**



## Environmental impact assessment

- All projects have impacts
- How, where and when will they occur?
- Are the impacts significant?
- Can they be managed?
- What are the residual impacts?

## Environmental impact assessment methods

- Compliance
  - Do predicted impacts meet or exceed guidelines/limits
  - For example, air quality
- Risk management
  - Likelihood and consequence
  - For example, hazard and risk
- Significance
  - Sensitivity and magnitude
  - For example, terrestrial and aquatic ecology

# Significance of impact and management requirements

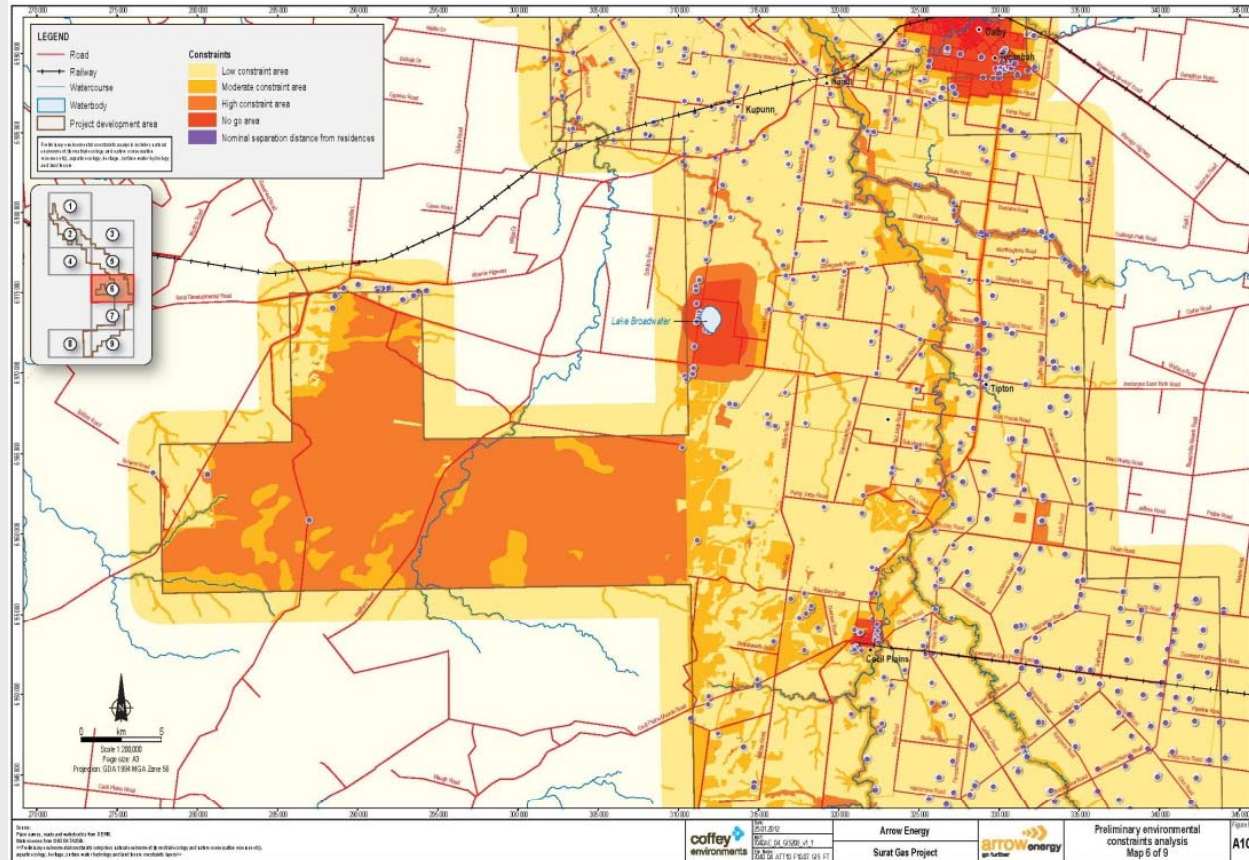
		Sensitivity of Environmental Value		
		Moderate	Moderate	Low
Significance of Impact	High	Design out or specific management measures	High	Moderate
	Moderate	Moderate	Moderate	Moderate
	Low	Moderate	Moderate	Negligible

A dashed diagonal line runs from the bottom-left to the top-right of the matrix, separating the 'Design out or specific management measures' region (top-left) from the 'Standard management measures' region (bottom-right).

# Environmental framework

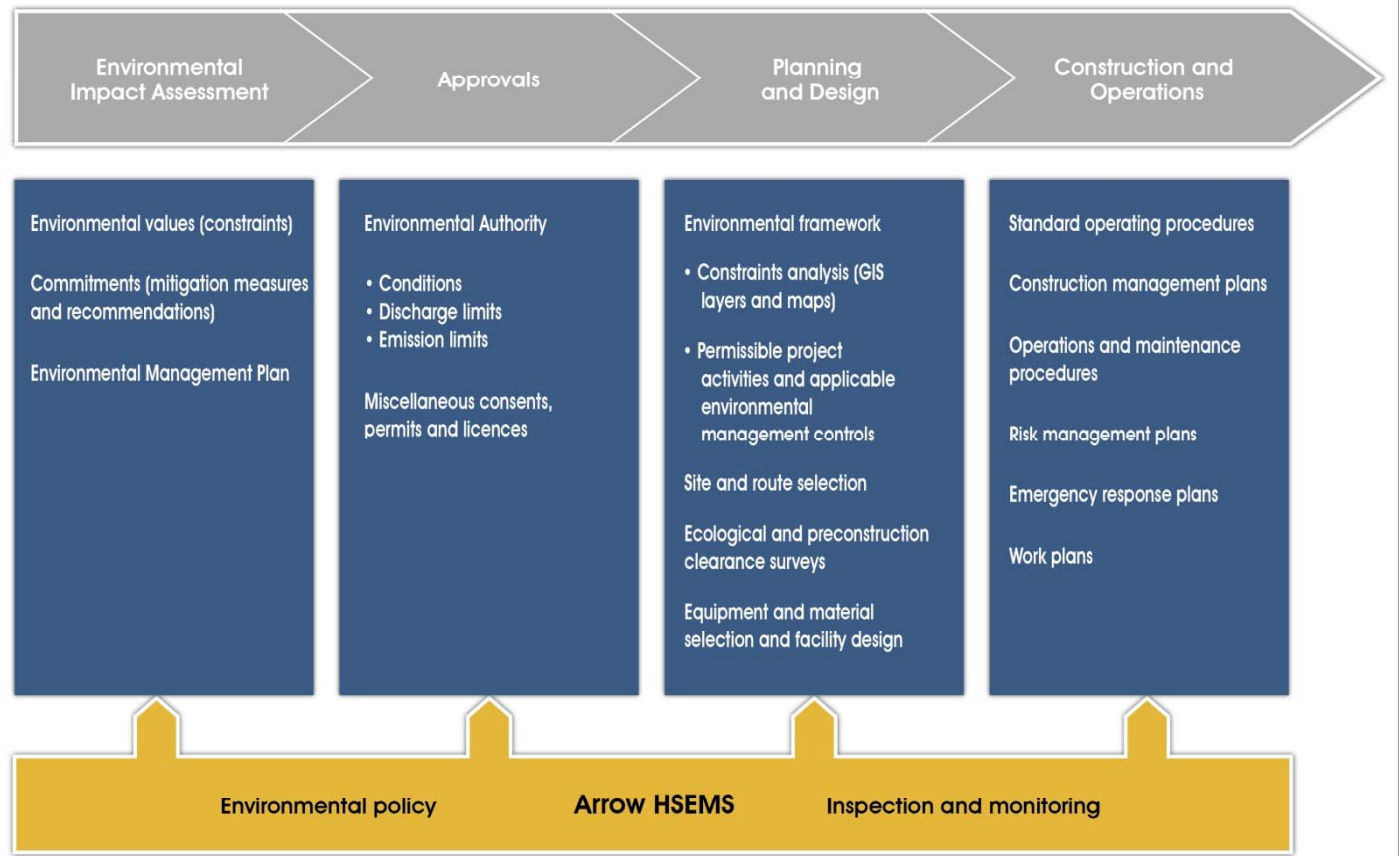
Constraint	Infrastructure			Applicable Framework
	Wells	Flowlines & Pipelines	Production Facilities	
No Go	No	No	No	No project activities permitted
High	Yes	Yes	No	Project activities permitted only with very strict controls
Moderate	Yes	Yes	Yes	Standard and specific environmental controls
Low	Yes	Yes	Yes	Standard (procedural) environmental controls

# Environmental framework cont'd (constraints map)



- Constraint informed by sensitivity of environmental value
- Management measures reflect level of constraint
- Preliminary mapping; to be updated with EIS findings

# Environmental framework cont'd



## Key environmental impacts

- Groundwater
- Agriculture
- Amenity (noise, air quality, visual)
- Socio-economic
- Roads and traffic





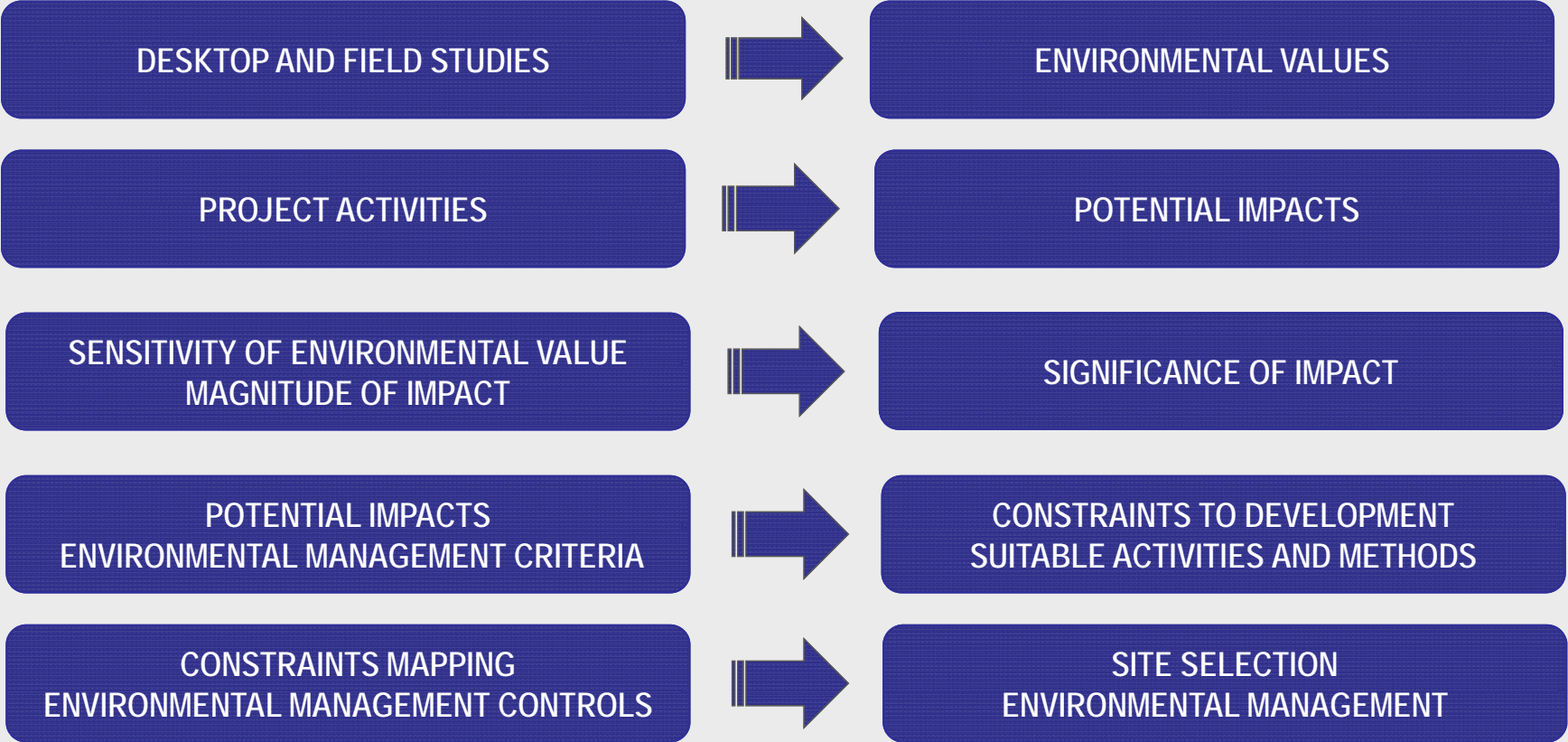
## Making a submission

- Content of submission
  - Scope of assessment (Terms of Reference)
  - Adequacy of assessment
  - Management measures
- In writing and signed
- Received by DERM no later than **5 pm Thursday 14 June 2012**
  - Mailing/emailing addresses for submissions on fact sheets

# Questions



# Environmental framework



## Enquiries about Surat Gas Project EIS

- Hotline freecall **1800 038 856**
- Email address: **[suratgas@arrowenergy.com.au](mailto:suratgas@arrowenergy.com.au)**
- Website **[www.arrowenergy.com.au](http://www.arrowenergy.com.au)**

## Environmental impact assessment processes

EIS	Legislation	Details
LNG Plant	SDPWO Act (Qld) EPBC Act (Cwlth)	<ul style="list-style-type: none"> <li>• Draft EIS submitted to Qld Govt Dec 2011</li> <li>• EIS submission period 14 April – 28 May 2012</li> </ul>
Arrow Bowen Pipeline	EP Act (Qld) EPBC Act (Cwlth)	<ul style="list-style-type: none"> <li>• Route selection underway</li> <li>• Draft EIS submitted to Qld Govt Dec 2011</li> <li>• EIS submission period 23 March – 24 May 2012</li> </ul>
Surat Gas Project	EP Act (Qld) EPBC Act (Cwlth)	<ul style="list-style-type: none"> <li>• Draft EIS submitted to Qld Government Dec 2011</li> <li>• EIS submission period 16 March – 14 June 2012</li> </ul>
Bowen Gas Project	EP Act (Qld) EPBC Act (Cwlth)	<ul style="list-style-type: none"> <li>• Seasonal ecological surveys commenced Q4 2011</li> <li>• EIS planning underway, EIS field surveys commence April 2012</li> <li>• ToR for EIS expected June 2012</li> <li>• Draft EIS expected to be submitted Q4 2012</li> </ul>